

# The Ultimate Audio Professional



The best audio experts don't rely on their ears alone.

# The Competition Is Fierce

Enjoy audio, make money, have fun – all good reasons to be in the audio business. But, it's getting tougher – stiffer competition, more complex venues and more challenging problems to solve. You need more than your ears to insure your installation meets all its required specifications.

*Separate yourself from the pack.*



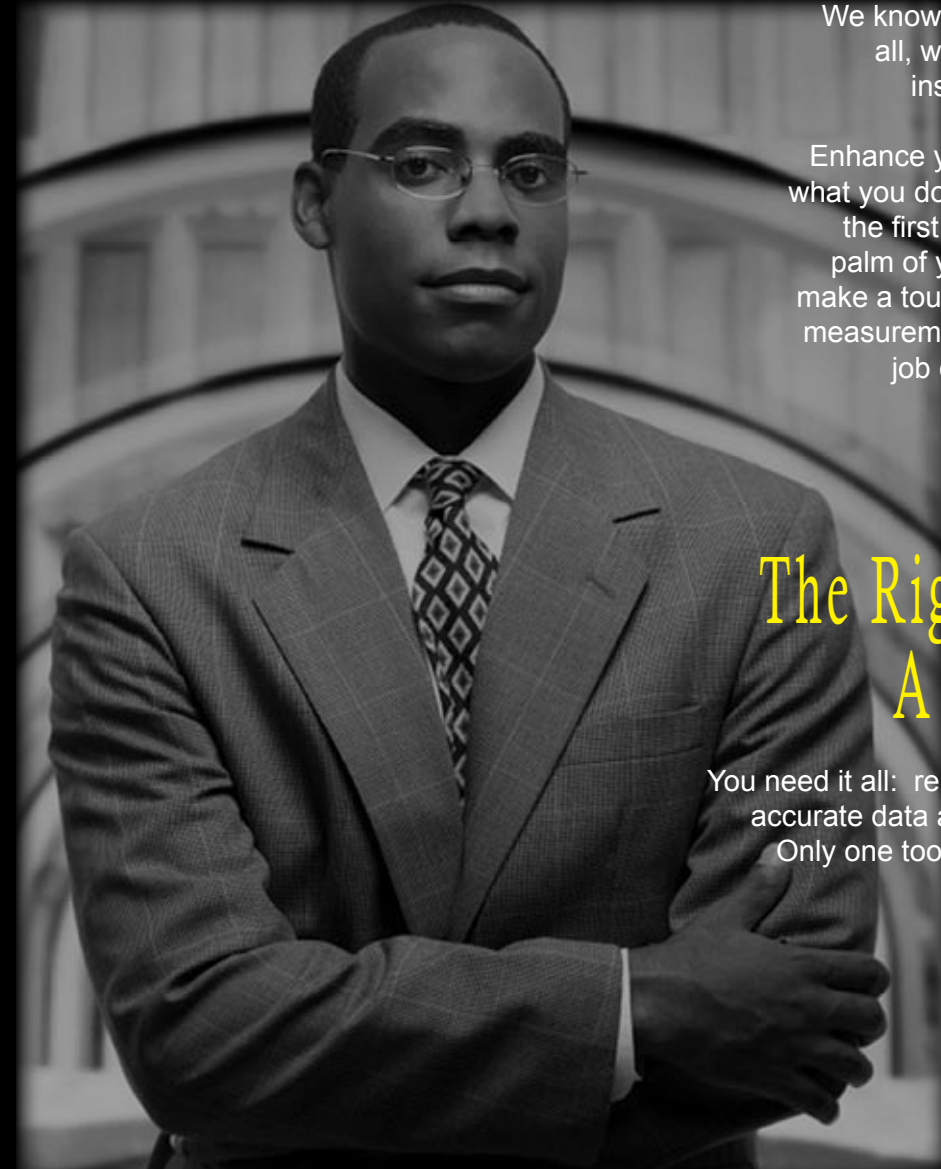
# We Can Help

We know audio measurements– after all, we've been making audio test instrumentation for forty years.

Enhance your reputation. Get better at what you do. Do it faster and get it right the first try. Put our capability in the palm of your hand and we'll help you make a tough job easy by providing the measurement data you need to get the job done quickly and accurately.

# The Right Tool Makes A Big Difference

You need it all: reliability, portability, precision, accurate data and a user friendly interface. Only one tool makes sense– Ivie's IE-35!



# The Ultimate Audio Instrument

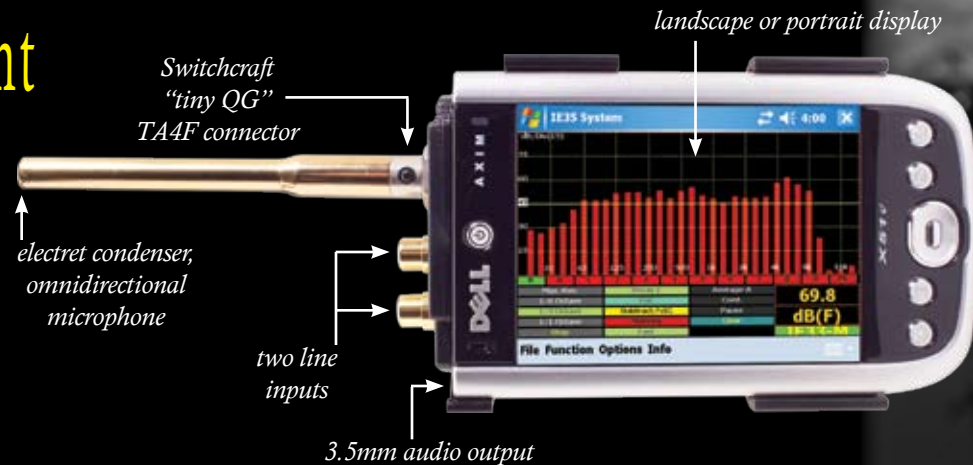
15 ounces of pure power! Dazzling VGA color display. Extraordinary capability. Unbelievably easy to use. Fast. Intuitive. Accurate. Powerful!

Once you hold it in your hand, you will know there is no other audio instrument quite like it!

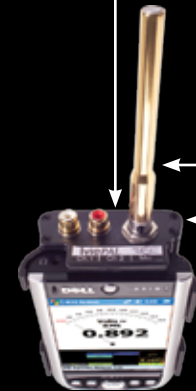
Make your measurements from the extensive suite of IE-35 capabilities, store the data and port it over to your PC. Using the bundled IvieXLS software, format and print the reports you want, right from your PC. Simple! Professional!

The open architecture of the IE-35 means your unit will never be obsolete. You can download the latest updates right from the Ivie web site. What could be easier?

For sophisticated audio measurement power in the palm of your hand, the IE-35 is indeed, the ultimate!

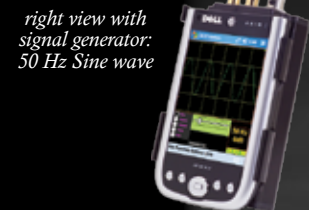
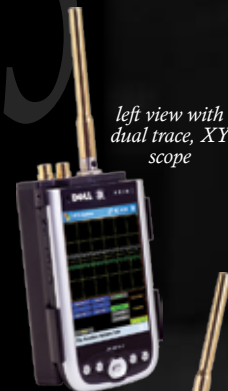


high quality pre-amp, 20-bit analog/digital converter and battery management circuitry



rugged aluminum jacket with an easy grip design and a black anodized finish

# IE-35



## Specifications

### Real Time Analyzer

FFT-based

Accuracy +/- 0.5 dB

1/24 octave above 125 Hz; 1/6 octave below 125 Hz

Octave bands from 20 Hz to 20 kHz on ISO centers

Continuous solid bar or LED style display

### Memories

9 temporary or "scratch pad" memories

All memories can be named and stored as standard delimited files  
Maximum number of files is only limited by available memory of the Axim and its expansion slots

Memories are stored at maximum resolution (2048 data points) regardless of RTA resolution setting

### SPL Meter

Response modes: fast, slow, impulse, peak

Four digit readout with 0.1 dB resolution

Selectable filter weighting: A, C and Flat

Octave bandwidths at 125 Hz, 250 Hz, 500 Hz, 1 kHz, 2 kHz, 4 kHz

Meets ANSI S1.4-1983 TYPE II with supplied microphone or TYPE I with optional Ivie IE-2P microphone preamp and capsule

### Microphone

Supplied microphone (TYPE II)

Electret condenser element

Omnidirectional

Frequency response between 20 Hz and 20 kHz

Remotable with optional cable

Optional microphone (TYPE I)

Ivie IE-2P preamp/power supply

Ivie 1133 or 1134 microphone capsule

1.5 foot microphone cable for IE-2P (part number 2PMC-2)

(longer mic cables are available)

bottom view with RT-60 reverb (optional)



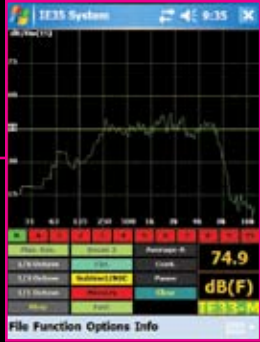
Visit [www.ivie.com](http://www.ivie.com) for more information.

\*Requires optional hardware

# RTA Features That Will Blow You Away

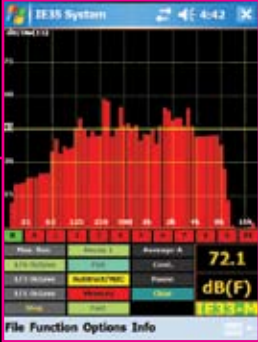
Ivie's "Display Options" menu system makes operation so intuitive and easy that you will choose to take your IE-35 with you everywhere you go— improving your efficiency, adding to your confidence and strengthening your reputation!

1/24 Octave - Max Res



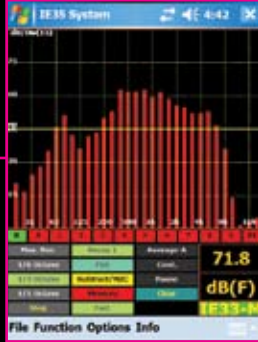
Shows real time audio spectrum from 20Hz to 20kHz giving up to 1/24 octave display above 125Hz.

1/6 Octave



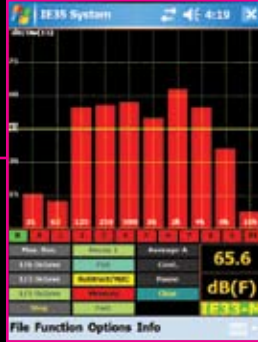
Displays sixty 1/6 octave bars at ISO centers.

1/3 Octave



Displays thirty 1/3 octave bars at ISO centers. Weighting and integration can be applied to RTA display.

1/1 Octave



Displays ten octave bars at ISO centers.

Sampling



The row of twelve buttons (R, A, 1, 2, 3, 4, 5, 6, 7, 8, 9, PE) allows both control of what is viewed on screen, and the ability to store data in "Scratch" memories.

Memory



Allows you to store, load, and clear files from scratch memories. Memories are stored in Max Res regardless of RTA resolution setting.

Averaging



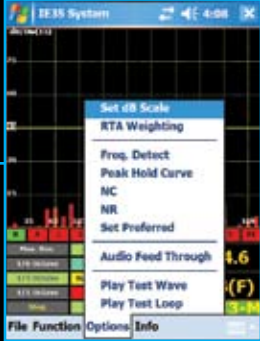
A powerful feature to create continuous or triggered averages as well as select the type of average - power vs. arithmetic.

Subtraction



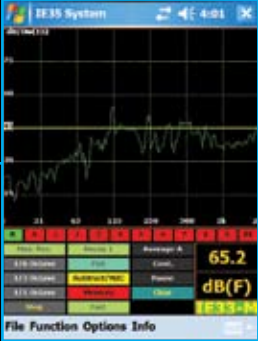
Allows for "differencing" a stored curve against the real time or stored curve. Useful in equalizing a room to a standard curve.

Display Options...



Easily launch the display features you want to see for your audio analysis.

Low Frequency Zoom



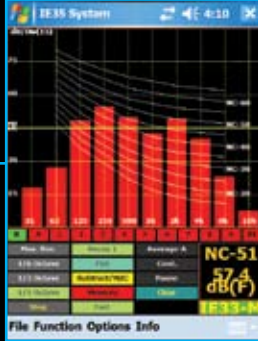
Focus the display from 20Hz to 2kHz with a 1Hz resolution. Can greatly assist in identifying ring modes, feedback freq, standing waves and other low freq phenomena.

Frequency Detection



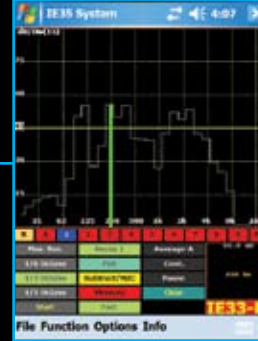
A cursor can be activated which constantly searches the spectra and displays the frequency of the highest level found in the spectrum.

NC and NR



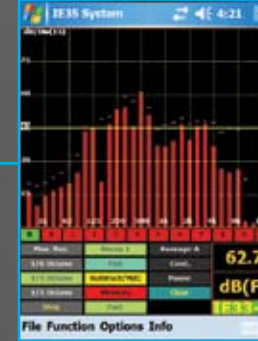
Invoke a set of NC contours to overlay the display. Observe a working real time calculation of the NC value.

Memory Cursor



For stored or "frozen" data, the entire audio spectrum can be interrogated for frequency information using a provided cursor.

Peak Hold



Shows the maximum dB level reached per audio band over a given period of time.

Continuous NIC



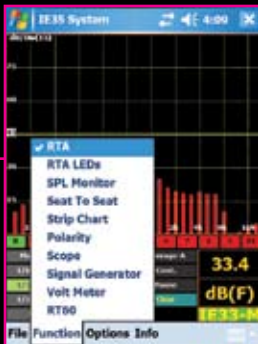
Quick and accurate transmission loss measurements. Take running or spot averages on both sides of a barrier. Display the plotted data and calculated Class number.



# Additional Functions You'll Enjoy

Ivie's "Function" menu system makes operation so intuitive and easy that you will choose to take your IE-35 with you everywhere you go—improving your efficiency, adding to your confidence and strengthening your reputation!

Function Menu...



Toggle easily between a wide variety of audio tools.

Large SPL Meter



Analog and digital meter with A, C or Flat weighting with user selectable thresholds.

Seat to Seat Coverage



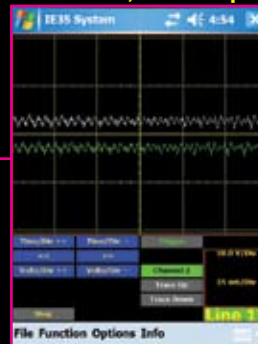
Records SPL variations when "walking" an area from a selectable reference point.

Polarity Check



Shows polarity and includes internal pulse generator or is compatible with others.

Dual Trace, X/Y Scope



Offers convenient view of wave forms with scalable amplitude and frequency.

Signal Generator



Capable of generating sine, square and triangle waves along with white and pink noise.

Strip Chart Recorder



Logs SPL over time from 1 minute to 8 hours plus continuous. The log can be saved and exported.

Audio Level Volt Meter



Displays AC Volts, dBu, dBV and AC V peak to peak. Range from low microphone levels up to +24 dBu.

COMING SOON!  
(Separate Program)  
Delay



Measures distance from speaker to microphone in ft, ms, or meters.

RT-60 Showing Slope & Chart



THERE'S MORE TO COME!

## Optional Software Modules

The most updateable and upgradeable instrument today! Plug your IE-35 into its charging cradle and download the most recent software updates and upgrades directly from Ivie's website!

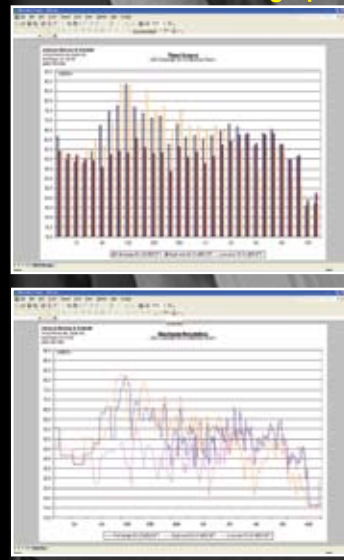
COMING SOON!  
(Feature Not Available in the U.S.)  
Speech Transmission Index (STI)



IvieXLS  
Control Panel



Top: 1/3 octave bar graph  
Bottom: Max Res line graph

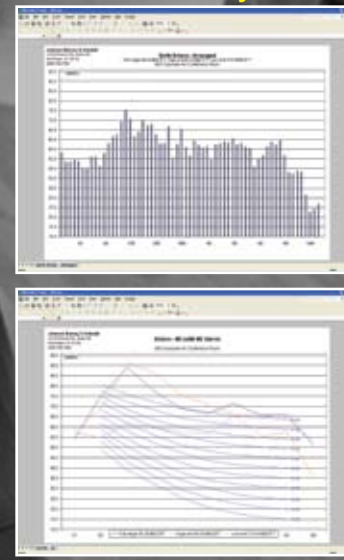


VALUE-ADDED FEATURE!

## IvieXLS Reporting Tools

Simply transfer data files to your PC and create graphs, make comparisons and customize reports for your customers. A great way to add value to every job!

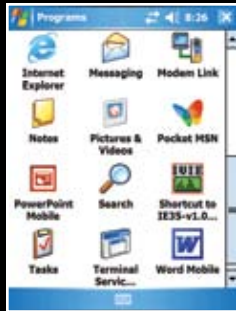
Top: 1/6 octave bar graph  
Bottom: NC Overlay



# The Ultimate Handheld Device

The Dell Axim™ X51v is the ultimate handheld device that delivers performance, connectivity and a brilliant VGA display at an affordable price. It provides powerful and fast processing for your calendar, contacts, web access, working documents and all your professional audio needs. Having one with you means you're prepared, organized and connected.

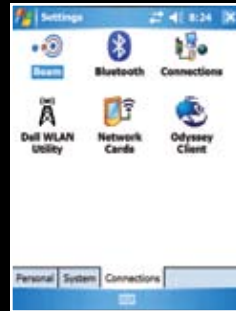
## Programs



## Media Player

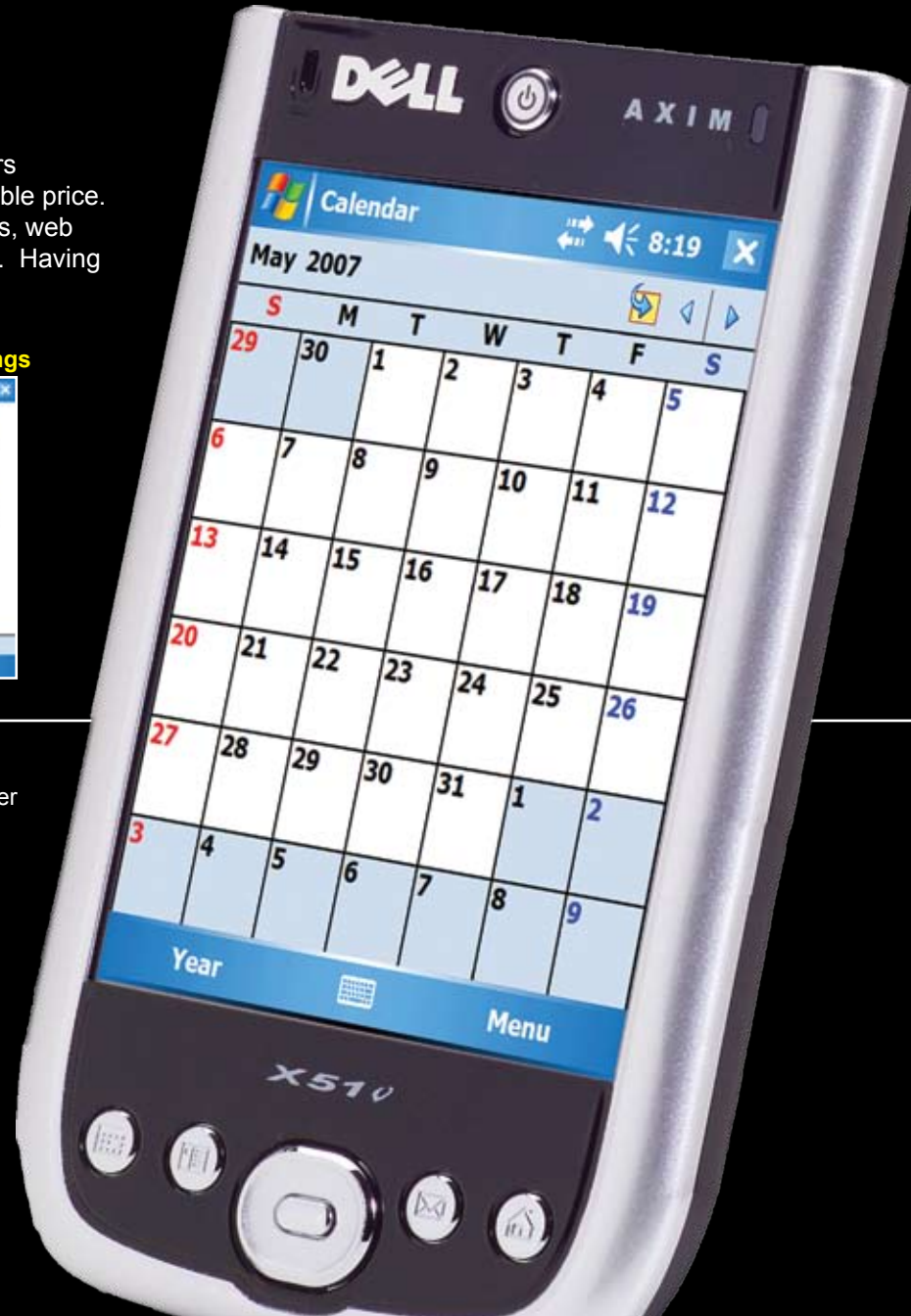


## Connectivity Settings



## Key Features

- Microsoft® Windows Mobile™ 5.0 software with Windows Media Player 10 Mobile
- Powered by the Intel® XScale™ PXA270 Processor at 624MHz
- Brilliant 3.7" color TFT VGA display with 640x480 resolution
- Integrated Intel® 2700G multimedia accelerator with 16MB video memory
- Integrated 802.11b and Bluetooth™ Wireless Technologies
- Packed with 64MB SDRAM and 256MB Flash ROM
- Integrated CompactFlash Type II and Secure Digital / SDIO Now! / MMC card slots provide flexible expansion
- VGA-Out Support with optional VGA Presentation Bundle
- Removable Primary Battery with optional High Capacity Battery
- 3.5mm Headphone / Headset Jack for Headsets to support VoIP and voice recognition applications
- Built-in microphone and speaker for easy recording on the go
- USB Cradle including Battery Charging Slot
- Sleek, stylish design



## Dell Specifications

### Processor

Intel® XScale™ PXA270 624MHz

### Operating System

Microsoft® Windows Mobile™ 5.0 software with Windows Media Player 10 Mobile

### Memory

RAM: 64MB SDRAM

ROM: 256MB Flash memory

### Display

TFT Color 16-bit, Touch Sensitive, Transflective LCD  
3.7 inches, 480 x 640 resolution at 65,536 colors (VGA)

### Graphics

Intel® 2700G multimedia accelerator with 16MB video memory

### Control and Lights

5-way Navigation button, Wireless On/Off Button, Lock Switch  
4 Program Buttons: Calendar, Contacts, Inbox, Home  
Voice Record Button, Reset Button, Backlit Power Button

### Event Notification

Charge Status, Wireless Status

### Expansion Slots

1 CompactFlash Type II Card Slot (3.3v)

1 Secure Digital / SDIO Now / MMC Memory Card Slot (3.3v)

### Ports and Connectors

Standard v1.2 (115 kbps) Infrared Port

36-pin Cradle/Sync Connector

3.5mm Headphone/Headset Jack

### Dimensions

Length 119 mm (4.7 inches), Width 73 mm (2.9 inches)

Height 16.9 mm (0.7 inches), Weight 175 grams (6.2 oz)

### Audio

Audio Controller I2S Codec, WM8750 sound chip

Stereo Conversion 16-bit stereo; 8.0, 11.025, 22.05 & 44.1 KHz sample rate

Full Duplex Record and Playback

Integrated Microphone and Speaker

### Power Supply

AC Adapter

### Battery Type

1100 mAh Lithium-Ion Removable, Rechargeable (standard)

2200 mAh Lithium-Ion Removable, Rechargeable (standard with the IE-35)

Visit [www.ivie.com](http://www.ivie.com) for more information.

# IE-35 - an Audio Instrument and a Business Tool

It's not just an audio test instrument but a business tool as well. Ivie gives you the advantages of a Windows Mobile® handheld PDA. With the Dell Axim® X51v, you will have the ultimate hand-held device. **BOTTOM LINE:** Ivie's IE-35 can help you become more productive and look great!

## Complete Package

The IE-35 comes as a complete package:

- Dell® Axim® X51v PDA with charger, synchronization cradle and cables (USB/RS232)
- IE-35 Pocket Audio Lab (PAL) "jacket" with built-in high quality preamplifier and analog/digital converter
- IE-35M Type II gold microphone with mini QG connector
- IE-35 acoustic analyzer software
- IvieXLS® graphing and plotting software (requires Microsoft Excel)
- RT-60XLS software for plotting optional RT-60 data (requires Microsoft Excel)
- High capacity 2200 mAH battery and back-cover
- Lower capacity battery and back-cover
- Custom belt-pack carrying case
- Electronic manual

## Options

- 33MC 25 foot microphone extension cable
- Ivie IE-2P preamp for use with ½ inch condenser microphone capsules (required for TYPE I measurements)
- Ivie 1133 or 1134 microphone capsule (required for TYPE I measurements)
- 2PMC-25 25 microphone cable for IE-2P (required for TYPE I measurements)
- PB-33 Wrist lanyard
- PS-33 Neck lanyard adaptor

## Partial Package

If you have your own Axim, a version of the package without the Dell Axim is also available.

System requirements include:

- Dell Axim X51v
- Microsoft® Windows Mobile™ 5.0 Windows Mobile
- ActiveSync 4.1

You can visit [www.ivie.com](http://www.ivie.com) for more information or request it from:



Ivie USA Headquarters  
(801) 766-7600  
[www.ivie.com](http://www.ivie.com)

