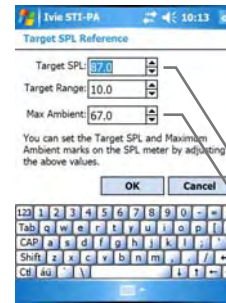


Ivive Technologies, Inc. STI-PA Quick Start

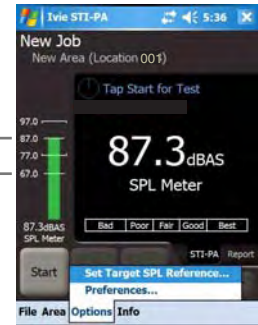
1. Insert the Axim into the IvivePAL jacket and plug in the IE-35M microphone
2. Press power button to turn on IE-35
3. Using the stylus tap on "Start"
4. Using the stylus tap on "STI-PA35"
5. Tap on File menu and select "New Job..."



8. Set up Target SPL and Target Range.



The Target level is determined by the actual playback level that will be used under normal operating conditions. If the emergency announcement is specified at 87 dB then set the Target SPL to 87. Typically the Max Ambient is set to a level 20 dB below the Target SPL.



6. Enter your Job File name and test Area information. Press the "OK" button.

7. Tap "Options" and then "Set Target SPL Reference".



9. Check that the Ambient level is at least 20dB less than the Target playback level.



10. Adjust playback level of STI-PA in room for target of 87dB. Now press the "Start" button.



11. Monitor the test during the 15 seconds. No impulse noise should occur during the test.



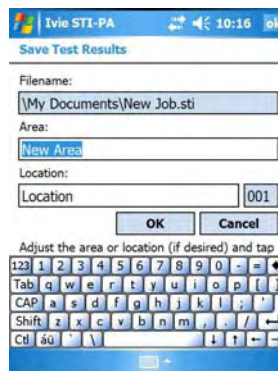
12. View the test results. If acceptable press the "Avg." button.



13. Note that an Average has been started. Now press "Start" to take another test.



14. If acceptable, press the Avg. button for a total of two tests. Take additional test(s) and press "Avg" after each test.



15. After sufficient tests are Averaged press the "Save" button to save the data to the Job file. Then press the "OK" button on the "Save Test Results."



16. Start tests at a new location. Start, Avg, Start, Avg....., Save. Move to a new location. Start, Avg, Start, Avg....., Save.....

Ivie Technologies, Inc. STI-PA Quick Start

Location Name and auto-increment number

Job Name (and Filename) — Mega Stadium
 Area Name — Upper Deck (Section AA 002)

15 Sec test countdown timer — **Test in Progress**

Target SPL range* — 95.0
 Target SPL for test* — 85.0
 Max allowable ambient SPL* — 60.0

SPL Bar indicator — 0.69 STI-PA
 dB "A" Weighted Slow response — 90.1dBAS SPL Meter
 * Set via the "Options>Set Target SPL Reference" menu

Start/Stop Test button: Press to Start or Stop an STI-PA test

Average button: Press Avg. button to start an average of multiple tests at the same location. If the test data is acceptable press "Avg." If not, press the "Clear" button. After sufficient tests are averaged, press the "Save" button to save the averaged tests and clear the Average accumulator.

Save test button: Press "Save" to save a single test or an Average of multiple tests. The "Save Test Results" window will appear.

Status indicator: Tap Start for Test
 Test in progress
 Test complete

Displays STI-PA during test and SPL prior to test

Number of tests in average accumulator and value of last test — 3 test avg-0.93/Last test-0.93

Graphic STI-PA indicator — Bad Poor Fair Good Best

View Report screen — STI-PA Report

View STI-PA screen

Clear button: Clear current test data
 Press twice to Clear Avg data

Save Test Results

Filename: \My Documents\Mega Stadium.sti
 Area: Upper Deck
 Location: Section AA 002

OK Cancel

Adjust the area or location (if desired) and tap

The test results will be saved in the "Mega Stadium" file with an ".sti" extension.

Before saving, the "Area" name or "Location" name can be changed if desired. If either is changed then the location number(002), will be reset to (001).

If you wish to save the test to the current "Area" and "Location" then press the "OK" button.

To view your "Saved" tests, press "File>View Job File..."

STI-PA version number — STI-PA35 v1.0====MV38.9====

Indicates that the Male Voice receiver was used (FV=female) — MV38.9

Calibration constant for SPL meter — CIS-0.96 dBAS-61.9

"File >Save As..." allows the Job file to be saved with a ".txt" or ".csv" extension. This allows viewing with a standard text reader or importation into a spreadsheet.

"File>Save As (Without Report)..." allows the Job file to be saved with a ".txt" extension without any of the seven bands of octave data.

Job & File Name — Mega Stadium
 Area Name — Upper Deck
 Location Name and auto-increment number — Section AA 001
 Date and time stamp — 29 June 06 14:47 Hours

STI-PA value of 3 Tests Averaged together with a Standard Deviation of 0.020 Common Intelligibility Scale value dB "A" weighted Slow SPL — STI-PA-0.92

Band	LEQ	MF1	MF2	Status
8000 Hz	40.7	0.82	0.79	ok
4000 Hz	55.2	1.00	0.96	ok
2000 Hz	54.1	0.97	0.94	ok
1000 Hz	57.1	1.00	0.93	ok
500 Hz	73.1	1.04	1.00	ok
250 Hz	72.8	1.03	0.85	ok
125 Hz	72.4	1.05	1.00	ok

Report Window

Mega Stadium
 Upper Deck (Section AA 002)

BAND	LEQ	MF1	MF2
8000 Hz	49.3 dB	0.95	0.92
4000 Hz	66.1 dB	1.01	0.94
2000 Hz	64.8 dB	0.97	0.98
1000 Hz	62.7 dB	0.99	0.75
500 Hz	81.9 dB	1.01	1.02
250 Hz	81.6 dB	0.85	0.89
125 Hz	83.9 dB	0.90	0.86

CIS - 0.97

STI-PA is based on measuring the MTF (Modulation Transfer Function) which quantifies the degree to which the voice modulations are preserved in individual octave bands.

The modulation index for the two frequencies in each of the 7 octave bands is displayed.

Should either MF1 or MF2 index be equal to or greater than 1.3, an error detection will be displayed and the STI-PA number will be displayed in the color red.